

MACHINING CENTER SAUER ULTRASONIC 20



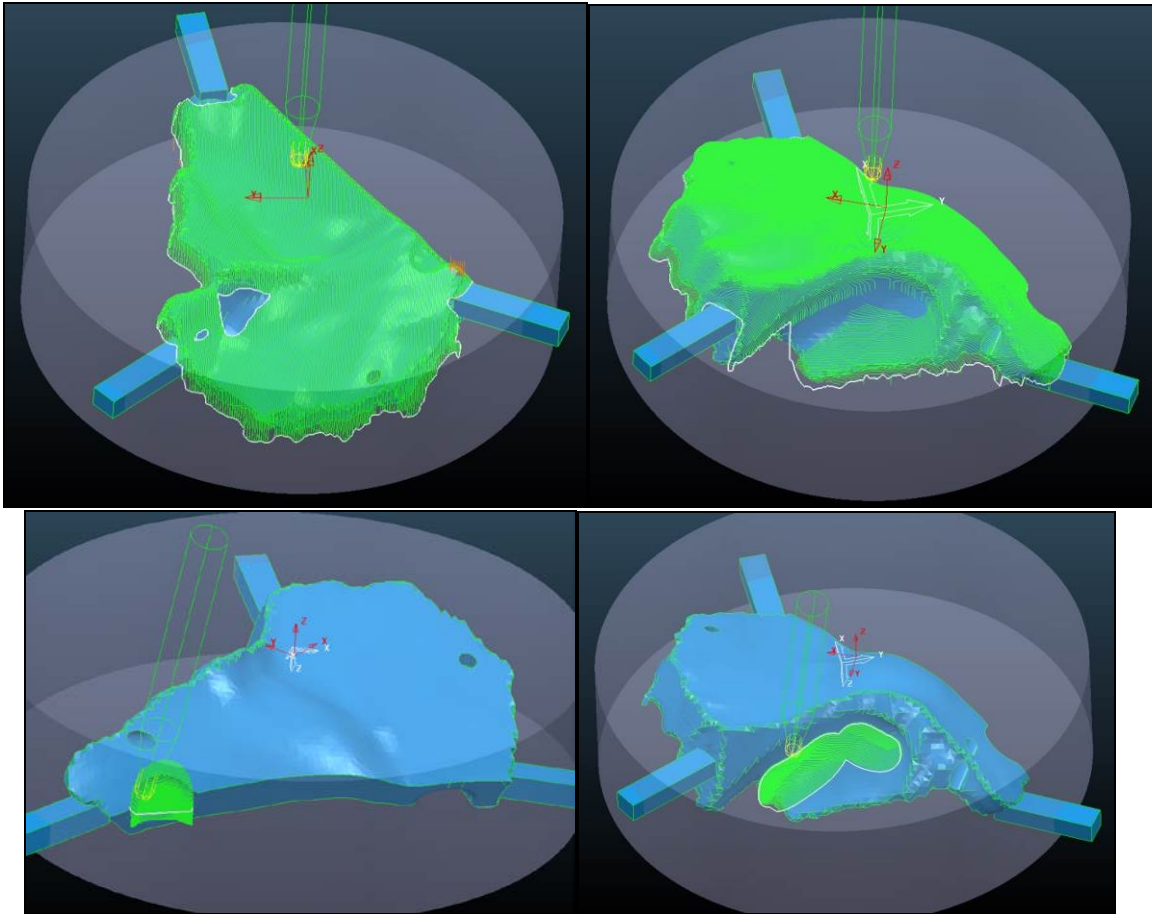
Main characteristics:

- Axis travel: X 200,Y 200,Z 280 mm;
- Linear drives on axis X/Y/Z;
- Static table with T-channels;
- Ultrasonic-Transfer: through inducer;
- Glass/ceramic/wolfram carbide consist of:
 - 3D-control;
 - Pulse generator control;
 - Zero clamping device;
 - Filtering of oil and emulsion. Electrostatic filter (emulsion \geq 5%);
 - Station for processing cooling 200 l;
 - Tank stainless steel and additional system with deep bed ULTRASONIC-processing.
- Optimized space in the closed structure:
Dimensions (H x W x D) 1.900 x 1.200 x 700 mm.
- Internal cooling through spindle;

- In the center of the spindle to the max. 40 bar pressure;
- Infrared measurement of the tool;
- Laser measurement tool;
- max of \varnothing tool 30 mm;
- max length: 200 mm;
- 5-axis version of the machine with NC two rotational axis table:
 - A- axis with direct motor
 - Range of rotation: -10° to 130° ;
 - Speed: max. 50 1 / min;
 - C-axis: NC-rotating table \varnothing 200 mm;
 - Range: 0 to 360° ;
 - Speed: max. 150 1 / min:
 - A- axis with direct motor;
 - Range of rotation: -10° to 130° ;
 - Speed: max. 50 1 / min;
 - C-axis: NC-rotating table \varnothing 200 mm;
 - Range: 0 to 360° ;
 - Speed: max. 150 1 / min.
- Automatic adjustment of the amplitude;
- Special cycle amplitude in CNC- programming;
- Holders type: HSK-E 32:
 - Max. speed (HSK-E 32): 42.000 1 / min;
 - Automatic shop for instruments with 24 sockets for HSK-32 holder;
 - Increased spindle moment Min. 6 Nm at S1 (100% ED);
- Set control devices and compensate for kinematic accuracy of the machine in 5-axis processing;
- Gun washout of chips in the working area.

ACHIEVED RESULTS WITH MACHINING CENTER SAUER ULTRASONIC 20

Titanium cranioplasty implant



5-axis strategy and produced implant

Dental prosthesis



Dental prosthesis type „anatomic bridge“



Dental construction body for „bridge“



Dental construction body for „bridge“



Dental prosthesis